

# NEIGHBORHOOD SLOW ZONE PROGRAM

Designated area within a city where traffic speeds are reduced to improve safety and livability for residents

## WHAT IS A NEIGHBORHOOD SLOW ZONE?

Area with low volume, mostly residential streets

Uses traffic calming measures to reduce speeding and crashes

Uses cost-effective measures that are quick to construct and proven to improve safety

Other cities, like Boston, Philadelphia have successfully implemented slow zones as part of their Vision Zero programs



Lancaster Streets where Slow Zones could work:



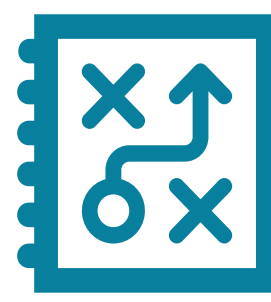
## Project Schedule



SUMMER 2025

### PROGRAM FRAMEWORK

Draft ideas and coordination with the City



FALL 2025 to SPRING 2026

### PROGRAM RECOMMENDATIONS

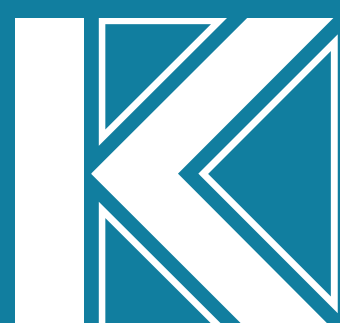
Refine ideas and coordination with the City



SPRING 2026

### IMPLEMENTATION

Identify priority zones to install improvements



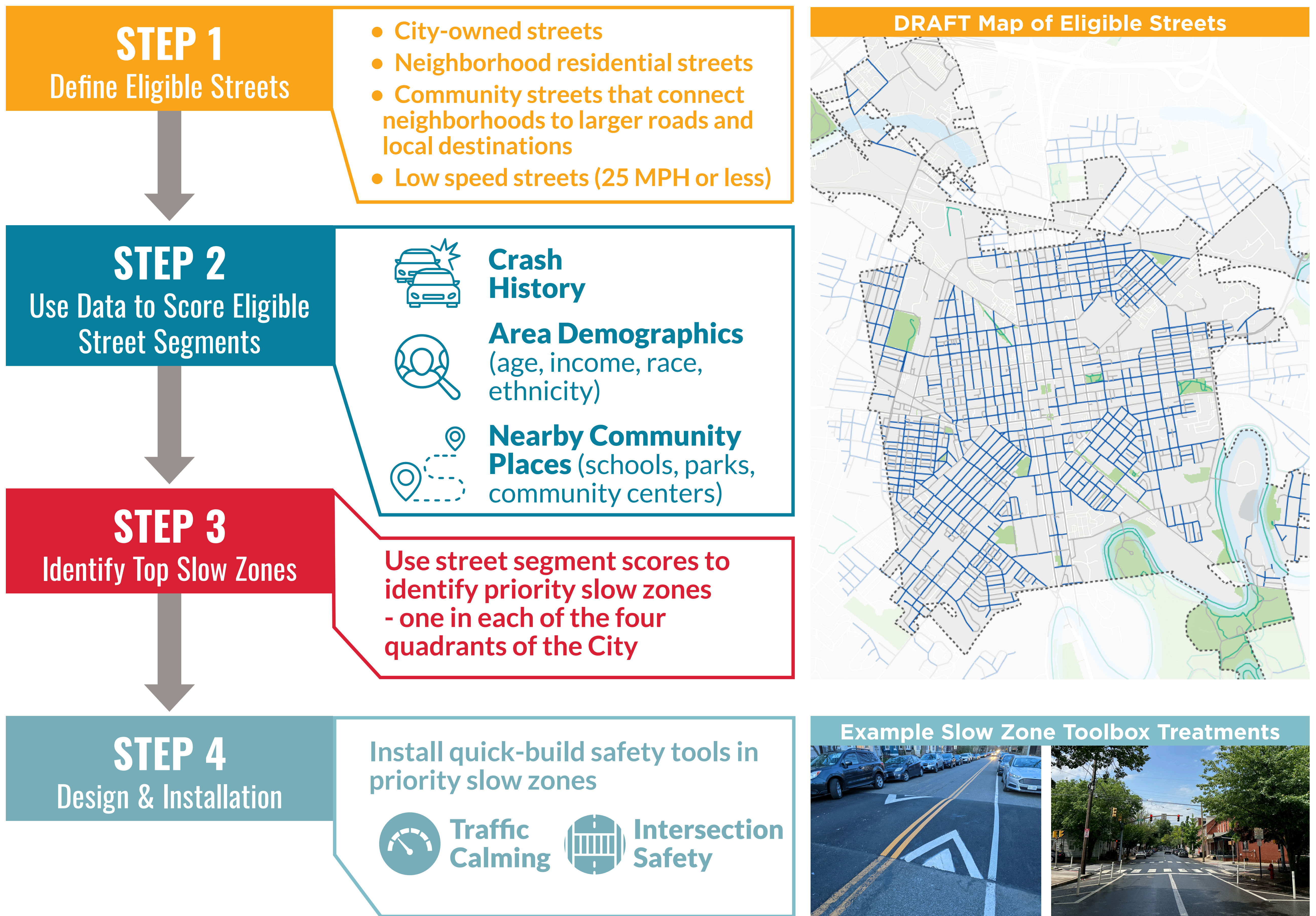
LEARN MORE ABOUT THE CITY'S WORK TO MAKE STREETS SAFER FOR EVERYONE AT [VISIONZEROLANCASTER.COM](http://VISIONZEROLANCASTER.COM)



# NEIGHBORHOOD SLOW ZONE PROGRAM

Implement quick-build traffic calming and intersection safety improvements to slow speeds on neighborhood streets

PROPOSED CITY-LED PROGRAM



## WE NEED YOUR FEEDBACK TO PRIORITIZE SLOW ZONES!

Should the three factors - crash history, demographics, community places - be weighted **EQUALLY** or should the factors have **DIFFERENT WEIGHTS**?

Equal Weights	Different Weights

Which category is **MOST IMPORTANT** when scoring streets for Slow Zones?

<b>Crash History</b>	
<b>Demographics</b>	
<b>Community Places</b>	

